

A tropical garden with a natural style rock pool will inspire a greater appreciation for **OUR** outdoor space and complementary climate

Discerning **OUTDOOR LIVING**

Outdoor living and entertaining is a prerequisite for any South African and we go to great lengths to design our homes and gardens to support this lifestyle. A living space that lures us outdoors and also retains elements of physical comfort is essential. Whether we wander onto the veranda with morning coffee, doze off lazily with a good book on a slow afternoon outdoors or whether the place is alive with family and friends, we want to make use of our outdoor living space in comfortable style.



*Top Tip:
A lush tropical look can be
effectively created without
overplanting.
Even in this natural
setting, less is more.*



FUNCTIONAL DESIGN

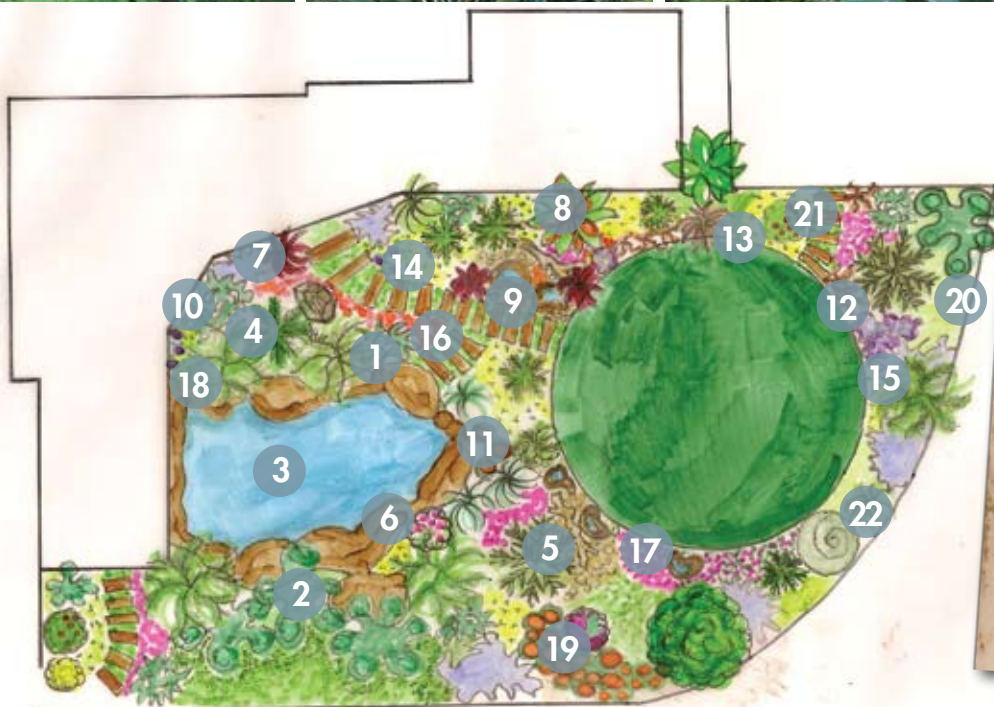
This month's garden provides an abundance of outdoor living and entertainment space. A large, L-shaped veranda sits alongside a natural style rock pool and provides a superb vantage point onto a tranquil circle of shaded lawn. There is ample seating available on the veranda, and a small bistro table and chairs can host an intimate conversation overlooking the garden. Next to the rock pool, the outdoor dining table sets the stage for family meals or an old-fashioned party.

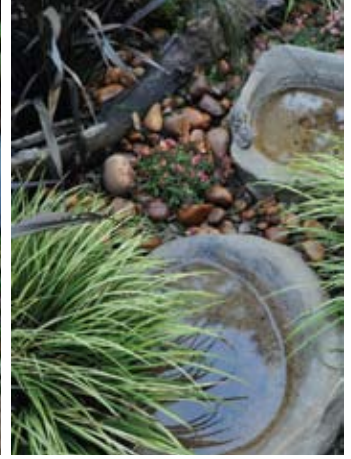




PLANT LIST

1. *Cyathea australis*
2. *Philodendron selloum*
3. *Philodendron 'Xanadu'*
4. *Cycas revoluta*
5. Cycad
6. Azalea
7. *Phormium 'Rubra'*
8. *Strelitzia reginae*
9. *Agapanthus praecox*
10. *Zantedeschia aethiopica*
11. *Clivia miniata*
12. *Phormium 'Baby Bronze'*
13. *Acorus gramineus 'Ogon'*
14. *Scabiosa africana*
15. *Limonium perezii*
16. *Diascia*
17. *Begonia*
18. *Viola*
19. *Primula*
20. *Lamium*
21. *Nandina domestica*
22. *Microlepidia*





FEATURED FOLIAGE

The established tree canopy in the garden and its surroundings provides a sense of intimacy, simultaneously making the garden feel much larger by virtue of ample borrowed scenery.

The planting around the pool is lush and tropical. A dramatic *Philodendron selloum* drapes itself over the edge of the pool as if inviting you to do the same. A grouping of tall tree ferns on the other side of the pool forms a feathery canopy over smaller ferns, arum lilies and a *Cycas revoluta*. Here one can readily imagine slipping into a rock pool somewhere in the mountains.

The sunnier areas around the lawn boast the colourful faces of indigenous *Scabiosa*, *Diascia* and the ever-faithful *Statice (Limonium perezii)*. The garden enjoys consistent blooms between these hardworking perennial plants. Azaleas also provide colour whilst the fragrance of *Murraya exotica* seasonally fills the air.

Strelitzia reginae anchors the corner of the garden against the patio and contributes striking colour for the flower vases of the home. Yellow *Acorus* grass is a handy linking element in the garden, carefully repeated throughout the space. It also adds significantly to the overall colour composition.

HARD LANDSCAPING MATERIALS

Cool grindstones dotted around the garden generously provide water to the rich variety of birdlife. A rustic sleeper path leads the way to an inviting circle of soft lawn. The circular shape of the lawn completely blurs the irregular lines of the property's perimeter and enhances the impression of the actual size of the space.

CREATURE COMFORT

The style of the garden is one of relaxed abundance, very much in keeping with the nature of the owners of this beautiful space. Order is only evident when one stops to analyse it. The prevailing effect of this hidden structure is easy order – a sense that everything is in place without an overbearing feeling of formality. This translates into a welcoming living space created to be as sociable as it is relaxed. 🌿