

*Modern*

# SIMPLICITY

A small, low maintenance garden can absolutely be practical and beautiful!



WORDS: Renée Wright, STYLING: Carin van Heerden,  
PHOTOGRAPHY: Eliza Roux



Contemporary furniture facilitates comfortable usage of a very elegant space

The lifestyle needs of both young and old are vastly different today than twenty years ago. We

mostly require our outdoor living space to be sophisticated, yet undemanding. Gardens are generally smaller and every element is experienced at close range. This calls for a garden design that is rich in detail, while remaining in good shape throughout the year.

This month's garden is equally suitable for a retired couple spending a lot of time away from home, and for a young family who are unable to spend a lot of time maintaining the garden. The space in this small garden has been cleverly maximised by using a very unusual ground pattern to lend a generous spatial feel while creating practical living areas.

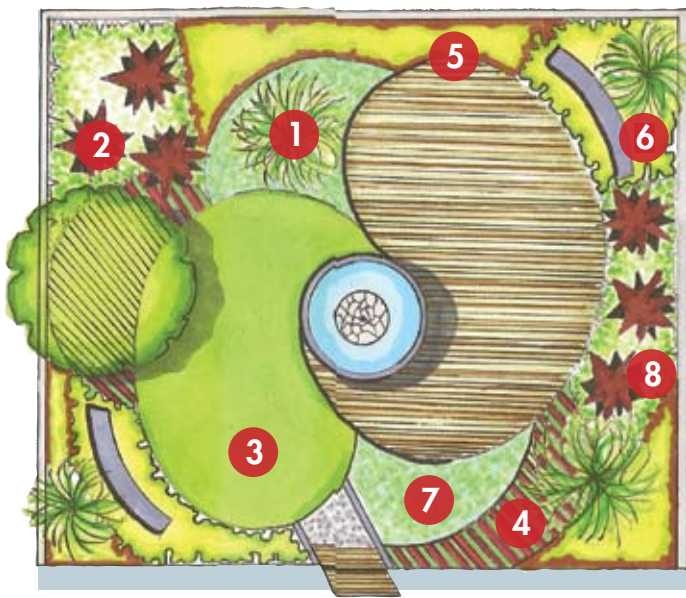
Sleek teardrop shapes drape around a central focal point in order to enhance its visual weight. The gentle texture of the synthetic lawn and the adjacent wooden deck provide for all the outdoor needs of the modern family. Softly arching miniature palms echo the same curves and, together with two bold feature walls with circular voids, provide an element of enclosure.

Richly layered foliage textures and colour contrasts provide interest and low maintenance enjoyment. The mirror mosaics



Greys and a variety of greens are punctuated by bold red or burgundy accents



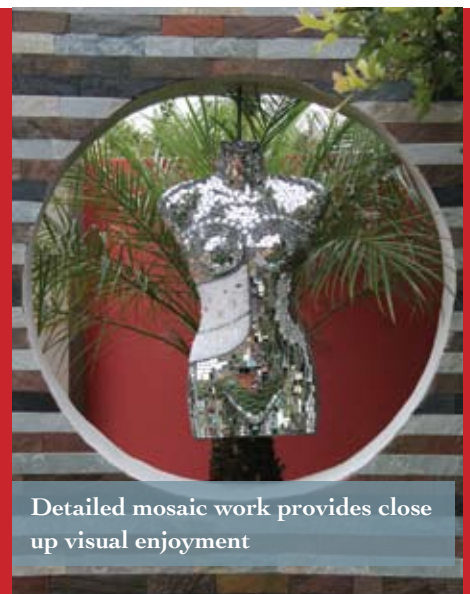


#### PLANT LIST

1. *Phoenix roebelenii*
2. *Cordyline* 'Burgundy Spire'
3. Synthetic lawn
4. *Nandina domestica* 'Pygmaea'
5. *Phormium* 'Baby Bronze'
6. *Scirpus* 'Green Mist'
7. *Carex* 'China Blue'
8. *Asparagus plumosus*



Richly layered foliage textures and colour contrasts provide interest



Detailed mosaic work provides close up visual enjoyment



Splashes of light from the mirror mosaics dance on the walls of the garden throughout the day

of the suspended focal points and the water feature sphere facilitate an enhanced spatial feel with its light reflective qualities. Depending on the time of day, splashes of light can be seen on the walls throughout the garden.

The colour scheme embraces the hard landscaping elements, plant choices, furniture and other decorating details. Greys and a variety of greens are punctuated by bold red or burgundy accents. One of the garden walls that can be viewed from inside the house has been painted a rich shade of burnt red. Bold red cushions with superb texture detail and curves provide for physical comfort.

Burgundy *Cordyline* contrasts with the almost fragile texture of *Asparagus plumosus*, and grey ornamental grasses almost invite you to run your hand through them. In winter, *Nandina domestica*

'Pygmaea' become flame red, once again in keeping with the overall colour scheme. The feature walls contain many different shades of grey granite riven cladding, which supports the contemporary, sleek feel of the garden. The curvy female torsos, with extraordinary detail in the mosaic work, are often the topic of conversation. They are lightly suspended within the walls, offsetting the potential of having the walls appear heavy set in the overall context. The wooden deck seems to float slightly above everything else and contains no visible screws, making it smooth and elegant.

The combined effect of all these elements is a garden that maintains sleekness, but through the use of curves, carefully layered interest and by harnessing reflected light, avoids a static feel. An elegant, contemporary and practical living space for today's family! 🌿



One of the garden walls that can be viewed from inside the house has been painted a rich shade of burnt red.

