

WORDS: Renée Wright, PHOTOGRAPHY: Elza Roux

# Manage awkward areas

A straight wall is no reason not to have the garden of your dreams – you simply need to make it work for you



s properties become smaller and our available gardening space shrinks, awkwardly angled, small gardens are

becoming more commonplace. Add high perimeter walls and you definitely need an inventive approach to create the beautiful face for every space!

This month's garden is just such a case – perimeter lines run at queer angles to the house and on the one side nearly shaves the edge of the paving surrounding the house. The perimeter walls are high and painted white in conformity with the complex regulations, making it even more of a design challenge.

The owners wanted a swimming pool, some water features, a rose garden and also a decorative gazebo-style structure which had to be able to house a car when non-resident children came to visit.

### Common pitfalls

There are a few common mistakes to be aware of when designing to blur the awkward lines of a perimeter as well as to soften its very presence:

- Planting trees in a straight line right in front of the wall will emphasise the line, rather than obscure it.
- Fixing objects of interest on to the wall will draw attention to it – not a good idea when one wishes to blur the boundaries!
- Light colours will always appear closer than darker ones – a white perimeter wall will 'contract' the spatial feel of the garden.

Planting trees  
in a straight line  
right in front  
of the wall will  
emphasise the  
line



The most revered member of the family routinely ensures the best seat in the house for himself while enjoying the garden with the family.

## Useful pointers

You can reduce the awareness of awkward perimeter lines and blur the property's boundaries effectively by:

- Picking up the ground pattern lines of the garden from those of the house, not the perimeter. The garden's shape will then associate positively with the house, thereby reducing awareness of the property's boundaries.
- Planting trees and shrubs in groupings rather than straight lines along the perimeter. If sufficient space for groupings is not available, even a subtle zigzag pattern will be an improvement on a straight line.
- Not expecting objects such as trellises to hide a wall or make you less aware of it as perimeter – it will do the opposite!
- Placing strong focal points in the foreground. It creates depth, making the garden feel larger while diverting the attention away from the perimeter itself. A little smoke and mirrors go a long way!



Decorative lights intertwined into the rose bushes announce a special event.

# A rose show in your garden.



With Sudden Impact for Roses, you'll not only find your roses produce more and better blooms, but they'll be healthier too - more resistant to fungal diseases like black spot, powdery mildew and rust. Try Sudden Impact for Roses and you'll be rewarded with roses that make an impact on all who see them. No wonder it's recommended by the Western Cape, Gold Reef Rose and Midlands Rose Societies. Sudden Impact for Roses by Neutrog. Get it from your favourite garden centre now.



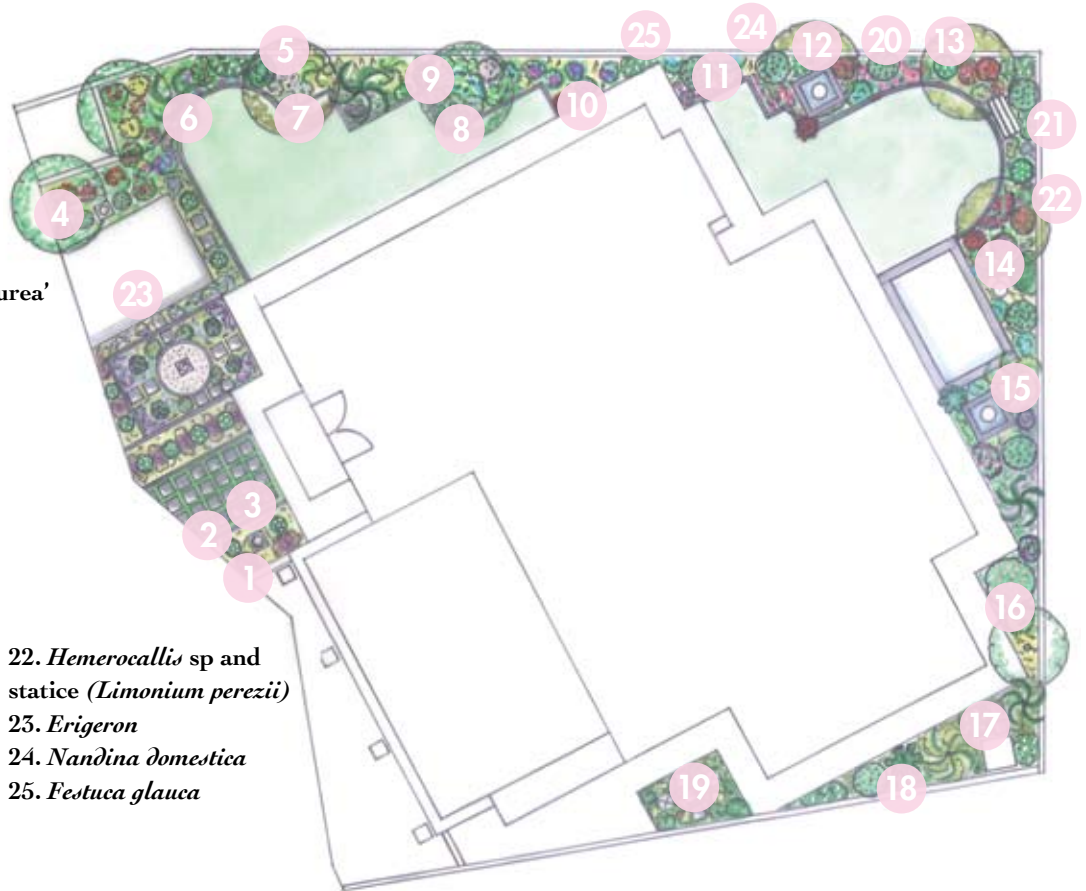
**NEUTROG**  
FERTILISERS  
The Experts' Choice

Neutrog Africa PO Box 81 Philadelphi 7304  
T (021) 972 1958/972 1963 F 086 672 2328

[www.neutrog.co.za](http://www.neutrog.co.za)

## Plant list

1. *Lavandula dentata*
2. *Rosa* 'Iceberg' and 'Simplicity' standards and red miniature roses
3. *Lysoimachia nummularia* 'Aurea'
4. *Harpephyllum caffrum*
5. *Olea Africana*
6. *Cycas revoluta*
7. *Stachys byzantine*
8. *Philodendron* 'Xanadu'
9. Gardenia
10. *Phormium tenax* 'rubra'
11. *Syzygium paniculatum*
12. *Caesalpinia ferrea*
13. *Murraya exotica* standard
14. Rhododendron
15. *Cyathea australis*
16. Camellia
17. *Zantedeschia*
18. *Dicksonia antarctica*
19. Herb garden
20. *Agapanthus* (Blue Velvet)
21. *Plectranthus ecklonii*
22. *Hemerocallis* sp and statice (*Limonium perezii*)
23. *Erigeron*
24. *Nandina domestica*
25. *Festuca glauca*



*Plectranthus ecklonii*



*Festuca glauca*



Divert the  
attention  
away from the  
perimeter itself

